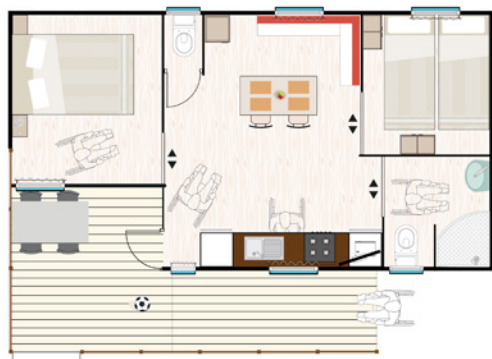




Characteristics and furnishings

**4 + 1** <9 years

Bungalow measurements:

8,4 m x 4,4 m = 37 m² (Includes terrace with porch of 5.30 m² and access with ramp)

No. of people: Four (4) + 1 Child up to 9 years old

Parking places: One (1)

Bungalow equipped with air conditioning (cooling/heating) with remote control.

**ROOMS: 2****Master bedroom:**150 cm x 200 cm bed
Nightstands
Individual reading lights
Mirror
Wardrobe and shelves**Individual bedrooms:**90 cm x 200 cm beds
Nightstand
Wardrobe and shelves

All beds have a mattress cover, blankets and pillows.

TERRACE WITH A WOOD PORCH AND ACCESS WITH RAMP:Measurements
(2,3 m x 2,3 m = 5,30 m²)
Garden table (120 cm x 80 cm)
4 Garden chairs**ARRIVAL / DEPARTURE TIMES**Day of arrival after **16,00** h. Day of departure before **10,00** h.Please be respectful of the rest and quiet time hours between **24:00** h. and **07:00** h.**KITCHEN:****Kitchen equipped with:**Cupboards and drawers
4-Burner stove top (gas)
Exhaust fan
2 Fridges with freezer 1 door (98 l)
Water heater - kettle
Microwave
Italian coffee pot
Nespresso coffee maker
Dishes and silverware
10 Plates
10 Bowls
10 Dessert plates
10 Forks
10 Spoons
10 Steak knives
6 Dessert forks
6 Dessert spoons
6 Dessert knives
6 Coffee spoons
1 Salad bowl
1 Small salad bowl
10 Water glasses
6 Coffee cups
6 Breakfast mugs
8 Breakfast bowls
1 Deep serving dish
Dish rack
Plastic trash can**Kitchenware:**Scissors
Grater
Strainer
CorkscrewCan opener
Bread knife
Meat tongs
Wooden spoon
Paring knife
27 cm kitchen knife
Cooking pot, 24" in diameter
Medium pot, 24" in diameter
Small pot, 20" in diameter
Saucepan, 16" in diameter
Cutting board
Ladle
Slotted spoon
Serving spoon
Frying pan, 24" in diameter
Frying pan, 20" in diameter
Grill pan
Ice bucket
Strainer
Juicer
Ash tray
Egg box
Toaster
Blender
Water pitcher
6 Individual place mats
Bread basket**Dining room with:**Sofa bed
76 cm x 100 cm Table
2 Chairs
24" LCD TV, remote control
Satellite channels and DTT**COMPLETE BATHROOM ADAPTED:**Toilet separate from the washbasin
Adapted shower cabin
Adapted toilet
Hair dryer
Toilet brush
Toilet paper holder
Shower stall
Towel rack
Hanger
Trash can
Gas water heater
Bath step**OTHER FURNISHINGS:**Fire extinguisher
Curtains
Clothes line
Hanger
Mini cleaning kit, mop, bucket, broom and dustpan**OPTIONAL SERVICES (additional charges; please ask):**Safe
Premium WiFi
Sheets and towels



Location on camping map

**LEGEND**

- | | |
|-----------------------------------|------------------------------------|
| 1 RECEPTION | 16 EL BOHÍO PLACE TO EAT |
| 2 CASH DISPENSER | 17 PUNTA CANA CASUAL FOOD |
| 3 TOILET BLOCK | 18 BILLIARDS AND GAMES |
| 4 DISABLED TOILETS | 19 STAGE SHOWS |
| 5 BABY TOILET | 20 CHILDREN'S SWIMMING POOL |
| 6 CHEMICAL WC | 21 ACTIVITY POOL |
| 7 LAUNDRIES | 22 RELAX SWIMMING-POOL |
| 8 SINKS | 23 CENOTE SWIMMING-POOL |
| 9 WASHING MACHINES | 24 BATHROOM POOL |
| 10 IRONS | 25 NURSING POOL |
| 11 CAR WASH | 26 MINI-CLUB |
| 12 PETANQUE | 27 PLAY GROUND |
| 13 PING-PONG | 28 PADDLE |
| 14 HAMMOCKS & VOLLEY BEACH | 29 SPORT COURT |
| 15 EL BOHÍO PLACE TO EAT | 30 GYM AREA |

BUNGALOWS



LA
SIESTA
SALOU
RESORT & CAMPING

Relax and Enjoy

Booking conditions



The booking request can be made through our website at www.lasiestasalou.com

The online booking service allows you to check availability, work out the total cost of your stay and pay a deposit to hold your booking.

Your booking confirmation will be e-mailed to you within a short time, along with a receipt for your deposit.

The deposit to confirm the booking will be:

- Mobil-homes & bungalows bookings : 40% of the total amount.

- Offers and promotion bookings: 100% of the total amount.

Payment will be made online at the end of the booking.

For pre-bookings, failure to make payment before the indicated date will result in the cancellation of the request for pre-booking.

Once we have received the payment, we will confirm your reservation by e-mail.

Mobil-home and bungalow bookings will be held until 12:00 hours on the day following that for which the booking has been made.

Once this period has elapsed, the camping reserves the right to re-rent the space in question.

This reservation is personal and cannot be changed without authorization from reception.

For cancellations made up to 40 days before the arrival date 90 % of the deposit will be refunded and between 39 and 20 days the refund will be 50 %. After that time no refund will be made.

Offers are not refundable in any case.

Any modification during the stay, both with regard to the number of guests and the days reserved, will be communicated to reception immediately. In any case, the minimum amount to be billed will never be less than that corresponding to the period of days reserved.

COVID-19

The amount paid in the reservation will be refunded in the following cases:

- Legal impossibility of traveling.
- Territorial confinement.
- Closure of the resort facilities.
- Home confinement (necessary medical proof).

For all other cases see general cancellation conditions.

Arrival and departure times will be:

DAY OF ARRIVAL:

The mobil-home or bungalow will be available as of 16:00 hours however, guests will be allowed into the camp ground itself prior to this time.

DAY OF DEPARTURE:

The bungalow or mobil-home must be vacated and in perfect condition before 10:00 hours (Caribe Club at 12:00 hours).

The user must verify the booking confirmation and notify "Camping La Siesta" immediately by e-mail of any error.

Guests must wear the identification bracelet at all times inside the campsite.

TOURIST TAX

- All bookings must be by regulations, pay a tourist tax per person and night.

- There is a maximum amount established, corresponding to seven nights per person.

- People under 16 years, are exempt from paying this tax.

IMPORTANT RULES

1.No more people than those indicated for each accommodation can be accommodated.

2. Animals are not allowed in the accommodation.

3. Upon arrival, the totality of the contracted stay will be paid, discounting the part that has been sent as a reservation.

VISITS

Visits to clients staying at the campsite follow these regulations:

Any authorized visit must be identified and accept internal regulations.

1.Guests staying in the camping area who have relatives, friends or acquaintances staying in bungalows or mobil-homes may not make use of the facilities and services of the latter in excess of the maximum contracted capacity.

2.Bungalows, mobile home and plots.

-When the occupancy of the accommodation is the maximum allowed, the visitors will not be able to use the accommodation. If they wish and, with prior authorization from the reception, they can have a day pass as a meal included in the camping buffet. Check prices, conditions and availability at the reception.

-In the event that the occupancy of the accommodation is not the maximum and allows the visit, authorization from the reception will always be necessary. Check prices, conditions and availability at the reception.

Visitors will deposit an identity document, which they can collect upon departure.

Visiting hours are from 09:00 hours to 24:00 hours.

BOOKINGS

1. Published prices may differ from those listed on the website, which shall be valid for online bookings only.

2. Rates valid subject to availability. You can check availability at www.lasiestasalou.com or by calling +34 977 38 08 52.

3. Rates may change due to modifications in current law.

ALL RESERVATIONS, WHETHER OR NOT THEY HAVE BEEN CONFIRMED, SHALL BE SUBJECT TO VERIFICATION OF THE INFORMATION ENTERED ON THE FORMS. CONSEQUENTLY, THE CAMP-GROUND RESERVES THE RIGHT TO CANCEL ANY RESERVATION AT THE TIME THIS INFORMATION IS CHECKED.