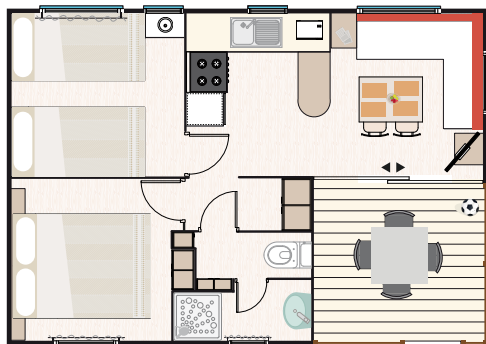




## Characteristics and furnishings



4 + 1 &lt; 9 years

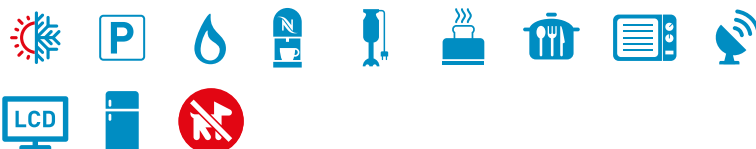
Bungalow measurements:

7 m x 5 m = 35 m<sup>2</sup> (Includes 5,70 m<sup>2</sup> terrace with a porch)

No. of people: Four (4) + 1 Child up to 9 years old

Parking places: One (1)

Bungalow equipped with air conditioning (cooling/heating) with remote control.

**ROOMS: 2****Master bedroom:**

150 cm x 200 cm bed  
Nightstands  
Mirror  
Wardrobe and shelves

**Individual bedrooms:**

90 cm x 200 cm beds  
Nightstand  
Wardrobe and shelves

All beds have a mattress cover, blankets and pillows.

**TERRACE WITH A WOOD PORCH:**

Measurements  
(2,44 m x 2,33 m = 5,70 m<sup>2</sup>)  
Garden table (120 cm x 80 cm)  
4 Garden chairs

**KITCHEN:****Kitchen equipped with:**

Cupboards and drawers  
4-Burner stove top (gas)  
Exhaust fan  
2-Door refrigerator - freezer (180 L)  
Water heater - kettle  
Microwave  
Italian coffee pot  
Nespresso coffee maker  
Dishes and silverware  
10 Plates  
10 Bowls  
10 Dessert plates  
10 Forks  
10 Spoons  
10 Steak knives  
6 Dessert forks  
6 Dessert spoons  
6 Dessert knives  
6 Coffee spoons  
1 Salad bowl  
1 Small salad bowl  
10 Water glasses  
6 Coffee cups  
6 Breakfast mugs  
8 Breakfast bowls  
1 Deep serving dish  
Plastic trash can  
Dish rack

**Kitchenware:**

Scissors  
Grater  
Strainer  
Corkscrew

Can opener

Bread knife  
Meat tongs  
Wooden spoon  
Paring knife  
27 cm kitchen knife  
Cooking pot, 24" in diameter  
Medium pot, 24" in diameter  
Small pot, 20" in diameter  
Saucepan, 16" in diameter  
Cutting board  
Ladle  
Slotted spoon  
Serving spoon  
Frying pan, 24" in diameter  
Frying pan, 20" in diameter  
Grill pan  
Ice bucket  
Strainer  
Juicer  
Ash tray  
Egg box  
Toaster  
Blender  
Water pitcher  
6 Individual place mats  
Bread basket

**Dining room with:**

Sofa bed  
76 cm x 100 cm Table  
2 Stools  
24" LCD TV, remote control  
Satellite channels and DTT

**FULL BATHROOM:**

Toilet, washbasin and shower  
Toilet brush  
Hair dryer  
Toilet paper holder  
Shower stall  
Towel rack  
Hanger  
Trash can  
Gas water heater  
Bath step

**OTHER FURNISHINGS:**

Fire extinguisher  
Curtains and blinds  
Clothes line  
Hanger  
Mini cleaning kit, mop, bucket, broom and dustpan

**OPTIONAL SERVICES**

(additional charges; please ask):

Safe  
Premium WiFi  
Sheets and towels

**ARRIVAL / DEPARTURE TIMES**  
Day of arrival after **16,00** h. Day of departure before **10,00** h.



Please be respectful of the rest and quiet time hours between **24:00** h. and **07:00** h.



## Location on camping map



## LEGEND

- |                            |                             |
|----------------------------|-----------------------------|
| 1 RECEPTION                | 16 EL BOHÍO PLACE TO EAT    |
| 2 CASH DISPENSER           | 17 PUNTA CANA CASUAL FOOD   |
| 3 TOILET BLOCK             | 18 BILLIARDS AND GAMES      |
| 4 DISABLED TOILETS         | 19 STAGE SHOWS              |
| 5 BABY TOILET              | 20 CHILDREN'S SWIMMING POOL |
| 6 CHEMICAL WC              | 21 ACTIVITY POOL            |
| 7 LAUNDRIES                | 22 RELAX SWIMMING-POOL      |
| 8 SINKS                    | 23 CENOTE SWIMMING-POOL     |
| 9 WASHING MACHINES         | 24 BATHROOM POOL            |
| 10 IRONS                   | 25 NURSING POOL             |
| 11 CAR WASH                | 26 MINI-CLUB                |
| 12 PETANQUE                | 27 PLAY GROUND              |
| 13 PING-PONG               | 28 PADDLE                   |
| 14 HAMMOCKS & VOLLEY BEACH | 29 SPORT COURT              |
| 15 EL BOHÍO PLACE TO EAT   | 30 GYM AREA                 |

## Booking conditions



The booking request can be made through our website at [www.lasiestasalou.com](http://www.lasiestasalou.com)

The online booking service allows you to check availability, work out the total cost of your stay and pay a deposit to hold your booking.

Your booking confirmation will be e-mailed to you within a short time, along with a receipt for your deposit.

The deposit to confirm the booking will be:

- Mobil-homes & bungalows bookings : 40% of the total amount.

- Offers and promotion bookings: 100% of the total amount.

Payment will be made online at the end of the booking.

For pre-bookings, failure to make payment before the indicated date will result in the cancellation of the request for pre-booking.

Once we have received the payment, we will confirm your reservation by e-mail.

Mobil-home and bungalow bookings will be held until 12:00 hours on the day following that for which the booking has been made.

Once this period has elapsed, the camping reserves the right to re-rent the space in question.

This reservation is personal and cannot be changed without authorization from reception.

For cancellations made up to 40 days before the arrival date 90 % of the deposit will be refunded and between 39 and 20 days the refund will be 50 %. After that time no refund will be made.

Offers are not refundable in any case.

Any modification during the stay, both with regard to the number of guests and the days reserved, will be communicated to reception immediately. In any case, the minimum amount to be billed will never be less than that corresponding to the period of days reserved.

### COVID-19

The amount paid in the reservation will be refunded in the following cases:

- Legal impossibility of traveling.
- Territorial confinement.
- Closure of the resort facilities.
- Home confinement (necessary medical proof).

For all other cases see general cancellation conditions.

### Arrival and departure times will be:

#### DAY OF ARRIVAL:

The mobil-home or bungalow will be available as of 16:00 hours however, guests will be allowed into the camp ground itself prior to this time.

#### DAY OF DEPARTURE:

The bungalow or mobil-home must be vacated and in perfect condition before 10:00 hours (Caribe Club at 12:00 hours).

The user must verify the booking confirmation and notify "Camping La Siesta" immediately by e-mail of any error.

Guests must wear the identification bracelet at all times inside the campsite.

### TOURIST TAX

- All bookings must be by regulations, pay a tourist tax per person and night.

- There is a maximum amount established, corresponding to seven nights per person.

- People under 16 years, are exempt from paying this tax.

### IMPORTANT RULES

1.No more people than those indicated for each accommodation can be accommodated.

2. Animals are not allowed in the accommodation.

3. Upon arrival, the totality of the contracted stay will be paid, discounting the part that has been sent as a reservation.

### VISITS

Visits to clients staying at the campsite follow these regulations:

Any authorized visit must be identified and accept internal regulations.

1.Guests staying in the camping area who have relatives, friends or acquaintances staying in bungalows or mobil-homes may not make use of the facilities and services of the latter in excess of the maximum contracted capacity.

2.Bungalows, mobile home and plots.

-When the occupancy of the accommodation is the maximum allowed, the visitors will not be able to use the accommodation. If they wish and, with prior authorization from the reception, they can have a day pass as a meal included in the camping buffet. Check prices, conditions and availability at the reception.

-In the event that the occupancy of the accommodation is not the maximum and allows the visit, authorization from the reception will always be necessary. Check prices, conditions and availability at the reception.

Visitors will deposit an identity document, which they can collect upon departure.

Visiting hours are from 09:00 hours to 24:00 hours.

### BOOKINGS

1. Published prices may differ from those listed on the website, which shall be valid for online bookings only.

2. Rates valid subject to availability. You can check availability at [www.lasiestasalou.com](http://www.lasiestasalou.com) or by calling +34 977 38 08 52.

3. Rates may change due to modifications in current law.

ALL RESERVATIONS, WHETHER OR NOT THEY HAVE BEEN CONFIRMED, SHALL BE SUBJECT TO VERIFICATION OF THE INFORMATION ENTERED ON THE FORMS. CONSEQUENTLY, THE CAMP-GROUND RESERVES THE RIGHT TO CANCEL ANY RESERVATION AT THE TIME THIS INFORMATION IS CHECKED.