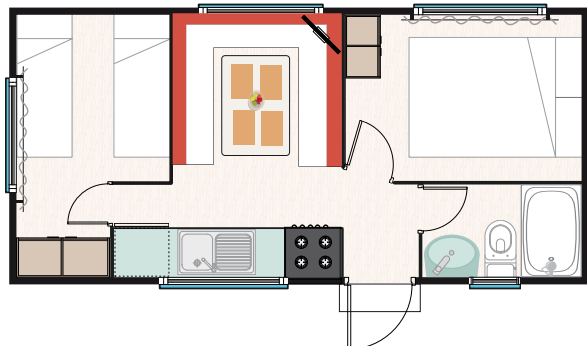




## Characteristics and furnishings



4 + 1 &lt;4 years

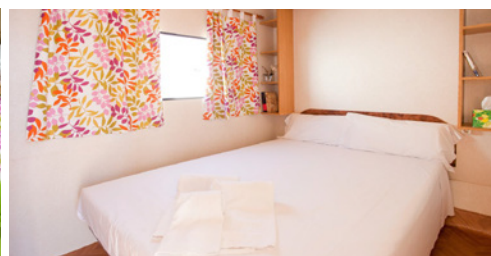
Mobil-home measurements:

6,35 m x 3 m = 19 m<sup>2</sup>

No. of people: Four (4) + 1 Child up to 4 years old

Parking places: One (1)

Bungalow equipped with air conditioning (cooling/heating) with remote control.

**ROOMS: 2****Master bedroom:**135 cm x 190 cm bed  
Wardrobe and shelves**Individual bedrooms:**70 cm x 180 cm beds  
Nightstand  
Wardrobe and shelves

All beds have a mattress cover, blankets and pillows.

**CEMENT TERRACE:**Measurements  
(2,8 m x 4,8 m = 13,45 m<sup>2</sup>)  
Garden table (135 cm x 70 cm)  
4 Garden chairs**KITCHEN:****Kitchen equipped with:**Cupboards and drawers  
4-Burner stove top (gas)  
Exhaust fan  
1-Door refrigerator - freezer (120 L)  
Italian coffee pot  
Nespresso coffee maker  
Microwave  
Water heater - kettle  
Dishes and silverware  
6 Plates  
6 Bowls  
6 Dessert plates  
8 Forks  
8 Spoons  
8 Steak knives  
4 Dessert forks  
4 Dessert spoons  
4 Dessert knives  
6 Coffee spoons  
1 Salad bowl  
8 Water glasses  
6 Coffee cups  
6 Breakfast mugs  
1 Deep serving dish  
Plastic trash can**Kitchenware:**Scissors  
Grater  
Strainer  
Corkscrew  
Can opener  
Bread knife  
Meat tongs  
Wooden spoonParing knife  
Cooking pot, 24" in diameter  
Medium pot, 24" in diameter  
Small pot, 20" in diameter  
Saucepan, 16" in diameter  
Cutting board  
Ladle  
Slotted spoon  
Serving spoon  
Frying pan, 24" in diameter  
Frying pan, 20" in diameter  
Grill pan  
Ice bucket  
Strainer  
Juicer  
Ash tray  
Egg box  
Glass pitcher  
Toaster  
Blender**Dining room with:**Sofa  
80 cm x 100 cm Table 24"  
LCD TV**FULL BATHROOM:**Toilet, washbasin and shower  
Toilet brush  
Small bathtub  
Toilet paper holder  
Wardrobe  
Towel rackHanger  
Trash can  
Gas water heater**OTHER FURNISHINGS:**Fire extinguisher  
Window blinds  
Clothes line  
Hanger  
Mini cleaning kit, mop, bucket, broom and dustpan  
Sun umbrella**OPTIONAL SERVICES (additional charges; please ask):**Safe  
Premium WiFi  
Sheets and towels**ARRIVAL / DEPARTURE TIMES**Day of arrival after **16,00 h.**  
Day of departure before **10,00 h.**Please be respectful of the rest and quiet time hours between **24:00 h.** and **07:00 h.**



## Location on camping map



## LEGEND

- |    |                         |    |                          |
|----|-------------------------|----|--------------------------|
| 1  | RECEPTION               | 16 | EL BOHÍO PLACE TO EAT    |
| 2  | CASH DISPENSER          | 17 | PUNTA CANA CASUAL FOOD   |
| 3  | TOILET BLOCK            | 18 | BILLIARDS AND GAMES      |
| 4  | DISABLED TOILETS        | 19 | STAGE SHOWS              |
| 5  | BABY TOILET             | 20 | CHILDREN'S SWIMMING POOL |
| 6  | CHEMICAL WC             | 21 | ACTIVITY POOL            |
| 7  | LAUNDRIES               | 22 | RELAX SWIMMING-POOL      |
| 8  | SINKS                   | 23 | CENOTE SWIMMING-POOL     |
| 9  | WASHING MACHINES        | 24 | BATHROOM POOL            |
| 10 | IRONS                   | 25 | NURSING POOL             |
| 11 | CAR WASH                | 26 | MINI-CLUB                |
| 12 | PETANQUE                | 27 | PLAY GROUND              |
| 13 | PING-PONG               | 28 | PADDLE                   |
| 14 | HAMMOCKS & VOLLEY BEACH | 29 | SPORT COURT              |
| 15 | EL BOHÍO PLACE TO EAT   | 30 | GYM AREA                 |

## Booking conditions



The Reservation request can be made by mail or directly through our website at [www.lasiestasalou.com](http://www.lasiestasalou.com)

The online pre-booking service allows you to check availability, work out the total cost of your stay and pay a deposit to hold your booking.

Your booking confirmation will be e-mailed to you within a short time, along with a receipt for your deposit.

The Deposit to confirm the booking will be:

- Mobil-homes & Bungalows Bookings : 40 % of the total amount.

- Offers and Promotion Bookings: 100 % of the total amount.

Payment may be made by Bank Transfer to our account (BIC BSABESBB) (IBAN ES 76) 0081-0169-31-0001287730, indicating the name and dates of the reservation or by paying on-line directly on the link found in the e-mail of acceptance of pre-booking.

Failure to make the payment before this date will entail the cancellation of the reservation request.

Once we have received the Deposit, we will confirm your reservation in writing or by e-mail.

Mobil-home and Bungalow bookings will be held until 12:00 hours on the day following that for which the booking has been made.

Once this period has elapsed, the Camping reserves the right to re-rent the space in question.

This reservation is personal and cannot be changed without authorization from Reception.

For cancellations made up to 40 days before the arrival date 90 % of the deposit will be refunded and between 39 and 20 days the refund will be 50 %. After that time no refund will be made.

Offers are not refundable in any case.

Any modification during the stay, both with regard to the number of guests and the days reserved, will be communicated to Reception

immediately. In any case, the minimum amount to be billed will never be less than that corresponding to the period of days reserved.

### COVID-19

The amount paid in the reservation will be refunded in the following cases:

- Impossibility to travel
- Territorial confinement
- Closure of the resort facilities
- Home confinement (necessary medical proof)

For all other cases see general cancellation conditions.

Arrival and departure times will be:

### DAY OF ARRIVAL:

The Mobil-home or Bungalow will be available as of 4 PM; however, guests will be allowed into the Camp Ground itself prior to this time.

### DAY OF DEPARTURE:

The Bungalow or Mobil-home must be vacated and in perfect condition before 10:00 am (Caribe Club at 12:00 pm).

The user must verify the booking confirmation and notify "Camping La Siesta" immediately in writing or by e-mail of any error.

Guests must wear the identification bracelet at all times inside the campsite.

### TOURIST TAX

- 0.50 € per person and night
- Tax is not included in the total Price and must be paid, directly at the campground.
- There is a maximum amount established, corresponding to seven nights per person.
- People under 16 years are exempt from paying this tax.

### IMPORTANT RULES

1. The fifth guest in Bungalows must be between the ages from 0 up to 9 years. In the remaining Mobil-homes must be from 0 up to 4 years. Accommodation of more than the stated number of guests is prohibited.
2. Days accumulated over a single period must be used consecutively.
3. The full price of the contracted stay, less the amount sent to make the reservation, must be paid at check-in.
4. Visiting times: 09:00 - 24:00
5. The Bungalow and Mobil-home areas are exclusively for the use of guests staying in them. An Accommodation Visitors Tariff is available when these visits exceed the maximum permitted capacity. This tariff includes lunch in the campsite restaurant.
6. Guests staying in the camping area who have relatives, friends or acquaintances staying in bungalows or Mobil-homes may not make use of the facilities and services of the latter in excess of the maximum contracted capacity.

### RESERVATIONS

1. Published prices may differ from those listed on the website, which shall be valid for online bookings only.
2. Rates valid subject to availability. You can check availability at [www.lasiestasalou.com](http://www.lasiestasalou.com) or by calling +34 977 38 08 52.
3. Rates may change due to modifications in current law.

ALL RESERVATIONS, WHETHER OR NOT THEY HAVE BEEN CONFIRMED, SHALL BE SUBJECT TO VERIFICATION OF THE INFORMATION ENTERED ON THE FORMS. CONSEQUENTLY, THE CAMPGROUND RESERVES THE RIGHT TO CANCEL ANY RESERVATION AT THE TIME THIS INFORMATION IS CHECKED.