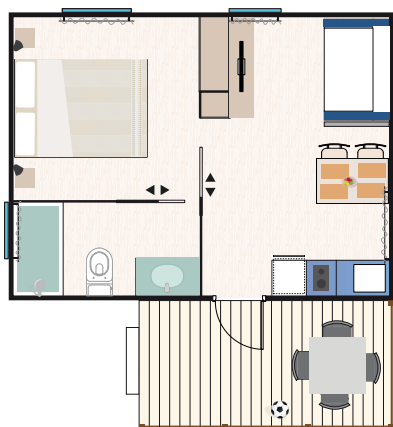




Characteristics and furnishings

**2** **+** **2** **<9 years**

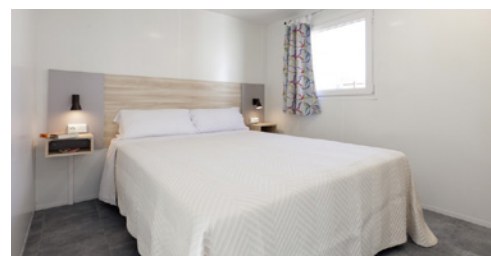
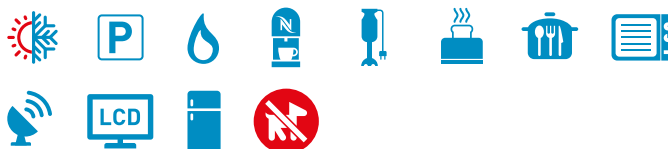
Bungalow measurements:

6,2 m x 4,5 m = 28 m² (Includes 8 m² terrace with a porch)

No. of people: Four (4) + 2 Children up to 9 years old

Parking places: One (1)

Bungalow equipped with air conditioning (cooling/heating) with remote control.

**ROOMS: 1****Master bedroom:**150 cm x 200 cm bed
Nightstands
Individual reading lights
Mirror
Wardrobe**TERRACE WITH A WOOD PORCH:**Measurements
(3,9 m x 2 m = 7,8 m²)
Garden table (70 cm x 70 cm)
4 Garden chairs**KITCHEN:****Kitchen equipped with:**Cupboards and drawers
2-Burner stove top (ceramic)
Exhaust fan
1-Door refrigerator - freezer (120 L)
Water heater - kettle
Microwave
Italian coffee pot
Nespresso coffee maker
Dishes and silverware
6 Plates
6 Bowls
6 Dessert plates
6 Forks
6 Spoons
6 Steak knives
6 Dessert forks
6 Dessert spoons
6 Dessert knives
4 Coffee spoons
1 Salad bowl
1 Small salad bowl
6 Water glasses
4 Coffee cups
4 Breakfast mugs
6 Breakfast bowls
1 Deep serving dish
Plastic trash can**Kitchenware:**Scissors
Grater
Strainer
Corkscrew
Can openerBread knife
Meat tongs
Wooden spoon
Paring knife
27 cm kitchen knife
Cooking pot, 24" in diameter
Medium pot, 24" in diameter
Small pot, 20" in diameter
Saucepan, 16" in diameter
Cutting board
Ladle
Slotted spoon
Serving spoon
Frying pan, 24" in diameter
Frying pan, 20" in diameter
Grill pan
Ice bucket
Strainer
Juicer
Ash tray
Egg box
Toaster
Blender
Water pitcher
4 Individual place mats
Bread basket**Dining room with:**Sofa bed (150 cm x 130 cm)
65 cm x 120 cm Table
2 Stools + 2 chairs
32" LCD TV, remote control
Satellite channels and DTT
Side table, 31 x 70 cm**FULL BATHROOM:**WC
Washbasin and shower
Toilet brush
Toilet paper holder
Shower stall and washbasin
Towel rack
Hair dryer
Hanger
Trash can
Gas water heater
Bath step**OTHER FURNISHINGS:**Fire extinguisher
Curtains and blinds
Clothes line
Hanger
Mini cleaning kit, mop, bucket, broom and dustpan**OPTIONAL SERVICES (additional charges; please ask):**Safe
Premium WiFi
Sheets and towels**ARRIVAL / DEPARTURE TIMES**Day of arrival after **16,00 h.**
Day of departure before **10,00 h.**Please be respectful of the rest and quiet time hours between **24:00 h.** and **07:00 h.**



Location on camping map

**LEGEND**

- | | |
|-----------------------------------|------------------------------------|
| 1 RECEPTION | 16 EL BOHÍO PLACE TO EAT |
| 2 CASH DISPENSER | 17 PUNTA CANA CASUAL FOOD |
| 3 TOILET BLOCK | 18 BILLIARDS AND GAMES |
| 4 DISABLED TOILETS | 19 STAGE SHOWS |
| 5 BABY TOILET | 20 CHILDREN'S SWIMMING POOL |
| 6 CHEMICAL WC | 21 ACTIVITY POOL |
| 7 LAUNDRIES | 22 RELAX SWIMMING-POOL |
| 8 SINKS | 23 CENOTE SWIMMING-POOL |
| 9 WASHING MACHINES | 24 BATHROOM POOL |
| 10 IRONS | 25 NURSING POOL |
| 11 CAR WASH | 26 MINI-CLUB |
| 12 PETANQUE | 27 PLAY GROUND |
| 13 PING-PONG | 28 PADDLE |
| 14 HAMMOCKS & VOLLEY BEACH | 29 SPORT COURT |
| 15 EL BOHÍO PLACE TO EAT | 30 GYM AREA |

Booking conditions



The Reservation request can be made by mail or directly through our website at www.lasiestasalou.com

The online pre-booking service allows you to check availability, work out the total cost of your stay and pay a deposit to hold your booking.

Your booking confirmation will be e-mailed to you within a short time, along with a receipt for your deposit.

The Deposit to confirm the booking will be:

- Mobil-homes & Bungalows Bookings : 40 % of the total amount.

- Offers and Promotion Bookings: 100 % of the total amount.

Payment may be made by Bank Transfer to our account (BIC BSABESBB) (IBAN ES 76) 0081-0169-31-0001287730, indicating the name and dates of the reservation or by paying on-line directly on the link found in the e-mail of acceptance of pre-booking.

Failure to make the payment before this date will entail the cancellation of the reservation request.

Once we have received the Deposit, we will confirm your reservation in writing or by e-mail.

Mobil-home and Bungalow bookings will be held until 12:00 hours on the day following that for which the booking has been made.

Once this period has elapsed, the Camping reserves the right to re-rent the space in question.

This reservation is personal and cannot be changed without authorization from Reception.

For cancellations made up to 40 days before the arrival date 90 % of the deposit will be refunded and between 39 and 20 days the refund will be 50 %. After that time no refund will be made.

Offers are not refundable in any case.

Any modification during the stay, both with regard to the number of guests and the days reserved, will be communicated to Reception

immediately. In any case, the minimum amount to be billed will never be less than that corresponding to the period of days reserved.

COVID-19

The amount paid in the reservation will be refunded in the following cases:

-Impossibility to travel

-Territorial confinement

-Closure of the resort facilities

-Home confinement (necessary medical proof)

For all other cases see general cancellation conditions.

Arrival and departure times will be:

DAY OF ARRIVAL:

The Mobil-home or Bungalow will be available as of 4 PM; however, guests will be allowed into the Camp Ground itself prior to this time.

DAY OF DEPARTURE:

The Bungalow or Mobil-home must be vacated and in perfect condition before 10:00 am (Caribe Club at 12:00 pm).

The user must verify the booking confirmation and notify "Camping La Siesta" immediately in writing or by e-mail of any error.

Guests must wear the identification bracelet at all times inside the campsite.

TOURIST TAX

- 0.50 € per person and night

- Tax is not included in the total Price and must be paid, directly at the campground.

- There is a maximum amount established, corresponding to seven nights per person.

- People under 16 years are exempt from paying this tax.

IMPORTANT RULES

1. The fifth guest in Bungalows must be between the ages from 0 up to 9 years. In the remaining Mobil-homes must be from 0 up to 4 years. Accommodation of more than the stated number of guests is prohibited.

2. Days accumulated over a single period must be used consecutively.

3. The full price of the contracted stay, less the amount sent to make the reservation, must be paid at check-in.

4. Visiting times: 09:00 - 24:00

5. The Bungalow and Mobil-home areas are exclusively for the use of guests staying in them. An Accommodation Visitors Tariff is available when these visits exceed the maximum permitted capacity. This tariff includes lunch in the campsite restaurant.

6. Guests staying in the camping area who have relatives, friends or acquaintances staying in bungalows or Mobil-homes may not make use of the facilities and services of the latter in excess of the maximum contracted capacity.

RESERVATIONS

1. Published prices may differ from those listed on the website, which shall be valid for online bookings only.

2. Rates valid subject to availability. You can check availability at www.lasiestasalou.com or by calling +34 977 38 08 52.

3. Rates may change due to modifications in current law.

ALL RESERVATIONS, WHETHER OR NOT THEY HAVE BEEN CONFIRMED, SHALL BE SUBJECT TO VERIFICATION OF THE INFORMATION ENTERED ON THE FORMS. CONSEQUENTLY, THE CAMPGROUND RESERVES THE RIGHT TO CANCEL ANY RESERVATION AT THE TIME THIS INFORMATION IS CHECKED.